

# uINNOVATION-GLOBAL

## Issue Highlights

---

Quantitative assessment of AI-based chest CT lung nodule detection in lung cancer screening: future prospects and main challenges

*Maruffjon Salokhiddinov, et al.*  
Page 7

Performance evaluation of the artificial intelligence assisted compressed sensing MR technique in routine clinical settings

*Adiraju Karthik, et al.*  
Page 16

Expert interview: Exploring the past, present, and future of total-body PET with Dr. Simon R. Cherry

*Simon R. Cherry*  
Page 34

Future of radiology in developing countries

*Harsh Mahajan and Vidur Mahajan*  
Page 60

## Disclaimer

---

The articles contained in this magazine are provided solely by the authors, and the author(s) of each article appearing in this magazine is/are solely responsible for the content thereof as well as personal data, which is used anonymously or complied with applicable data privacy laws or regulations. United Imaging Healthcare makes no representation or warranties, expressly or impliedly, with respect to the accuracy, timeliness, reliability, legitimacy, applicability, fitness, originality, or completeness of the contents of this magazine. United Imaging Healthcare assumes no legal responsibility or liability for any error, omission, or illegality with respect to the material contained within.

All articles contained in this magazine only represent the opinions and views of the authors and do not implicitly or explicitly represent any official positions or policies, or medical opinions of United Imaging Healthcare or the institutions with which the authors are affiliated unless this is clearly specified. Discussions of any brand, services, or products in the magazine should not be construed as promotion or endorsement thereof.

Articles published in this magazine are intended to inspire further general scientific research, investigation, understanding, and discussion only and are NOT intended to and should not be relied upon as recommending or promoting a specific medical advice, method, diagnosis, or treatment by physicians for any particular individual, nor to replace the advice of a medical doctor or other healthcare professional. Any individual wishing to apply the information in this magazine for the purposes of improving their own health should not do so without consulting with a qualified medical practitioner. All patients need to be treated in an individual manner by their personal medical advisors. The decision to utilize any information in this magazine is ultimately at the sole discretion of the reader, who assumes full responsibility for any and all consequences arising from such a decision. United Imaging Healthcare makes no representations or warranties with respect to any treatment, action, or application of medication or preparation by any person following the information offered or provided within or through the magazine. United Imaging Healthcare shall remain free of any fault, liability, or responsibility for any loss or harm, whether real or perceived, resulting from the use of information in this magazine.

The articles included in this magazine may contain work in progress, which represents ongoing research and development. Such technologies are not available for sale in China or the United States for clinical use and also may not be available for such sales in other countries around the world.

Please note that the magazine is intended to be distributed only within a limited scope instead of publication.

If you have any questions about the magazine, or simply wish to reach out to us for any other reasons, you are welcomed to contact us at the following email address: [compliance@united-imaging.com](mailto:compliance@united-imaging.com)

# PET/MR in the assessment of non-ischemic heart disease

Haiyan Wang<sup>a#</sup>, Vidya Sridhar<sup>b#</sup>, Qing Wan<sup>a</sup>, Xing Chen<sup>a</sup>, Zhiwen You<sup>a</sup>, Zheng Zhang<sup>b</sup>, Jianmin Yuan<sup>b</sup>, Lingzhi Hu<sup>b</sup>, Jun Zhao<sup>a</sup>

<sup>a</sup>Department of Nuclear Medicine, Shanghai East Hospital, Tongji University School of Medicine, 200120

<sup>b</sup>UIH America, Inc., Houston, TX, USA

<sup>#</sup>Contributed equally to this work

## Abbreviations:

CMR – cardiac MR; LGE – late gadolinium enhancement; PET – positron emission tomography; MR – magnetic resonance; CT – computed tomography; FLASH – fast low angle shot

## 1. Introduction

PET/MR has been utilized as an important medical imaging technology in clinical radiology for more than a decade. The introduction of the integrated PET and MR modalities has made it possible to simultaneously acquire high-resolution MR images with excellent soft tissue contrast [1-2] with metabolic PET images while minimizing ionizing radiation exposure to the patients. Furthermore, advances in improved attenuation correction [3-7] and MR triggered motion correction [8-11] have led to improved image quality, making PET/MR a preferred imaging modality [12].

Once such clinical application where PET/MR is particularly advantageous and shows potential for innovation is the assessment of non-ischemic cardiac disease [13]. Cardiac PET [14-15] allows for the assessment of cardiac viability or perfusion using different tracers. With evolving advanced MR imaging sequences, anatomic and functional analysis of the heart and large vessels has manifested in the form of high-definition cine sequences providing dynamic visualization of the heart and vascular structures. First-pass imaging of contrast medium transit through the myocardium has also been shown to depict stress-induced alteration in myocardial blood flow, differentiating between normal and hypo-perfused myocardium [16]. The accuracy of PET for the measurement of unmatched regions of myocardial perfusion, biomarkers and myocardial viability has further contributed to the increasing scope of applications for PET/MR imaging.

Of the different cardiac applications of PET/MR, the detection of presence and extent of myocardial fibrosis is

one of relevance in various cardiac diseases. Both the PET and MR modalities in such cases can not only quantify the fibrosis, but also offer insight into early detection and prognostication of such underlying conditions. The aim of this article is to review the existing technologies and clinical examples of PET/MR imaging in the evaluation of four main non-ischemic causes of myocardial fibrosis, namely non-ischemic cardiomyopathies, cardiac amyloidosis, myocarditis and heart failure. All cardiac PET/MR studies were performed on a United Imaging Healthcare's uPMR<sup>®</sup> 790 system (United Imaging Healthcare, Shanghai, China).

## 2. Technical review of PET/MR technology

### 2.1 PET radiotracers

While <sup>82</sup>Rb-RbCl, <sup>13</sup>N-NH<sub>3</sub>.H<sub>2</sub>O and <sup>15</sup>O-H<sub>2</sub>O are the common radiotracers utilized in PET perfusion, there have been newer PET imaging agents being studied for various cardiac applications. Table 1 summarizes these novel cardiac PET imaging radiotracers, and their target disease processes.

Table 1. summary of novel PET radiotracers in evaluation of cardiac disease.

Target disease process	Cardiac PET radiotracers
Perfusion	<sup>13</sup> N-NH <sub>3</sub> , H <sub>2</sub> O, <sup>82</sup> Rb, <sup>15</sup> O-H <sub>2</sub> O, <sup>18</sup> F-flurpiridaz
Myocardial sympathetic nerve activity	<sup>11</sup> C-hydroxyephedrine, <sup>18</sup> F-LMI1195
αβ3 and αβ5 integrins in angiogenesis or post myocardial infarction reperfusion	<sup>18</sup> F-Fluciclatide
Cardiac amyloid	<sup>11</sup> C-PIB, <sup>18</sup> F-florbetapir, <sup>18</sup> F-flutemetamol, <sup>18</sup> F-florbetaben
Fibrosis	<sup>68</sup> Ga-FAPI, <sup>18</sup> F-FAPI
Atherosclerotic microcalcification	<sup>18</sup> F-NaF
Tissue hypoxia	<sup>18</sup> F-MISO, <sup>18</sup> F-HX4, <sup>64</sup> Cu-ATSM, <sup>64</sup> Cu-CTS
Angiogenesis	<sup>68</sup> Ga-NOTA-RGD, <sup>18</sup> F-galacto-RGD
Macrophage-dependent inflammation	<sup>68</sup> Ga-pentixafor, <sup>64</sup> Cu-DOTATATE, <sup>68</sup> Ga-DOTATATE, <sup>89</sup> Zr-DNP

## 2.2 CMR sequence technology

Table 2 summarizes the commonly used MRI sequences in the anatomic, functional, and biochemical characterization

of myocardial tissue. As described in the applications below, these sequences provide information on early and late stages of various non-ischemic conditions [17].

Table 2. summary of commonly used sequences in the assessment of myocardial tissue and the relevant applications or findings.

Specific CMR sequence	Relevant application/finding
CINE T1W	Function, anatomical details, fat
Black Blood T2W	Anatomical details, edema
T1 mapping	Fibrotic areas (regional or diffuse), amyloidosis, fat
T2/T2* mapping	Edema, iron
ECV mapping	Fibrotic areas (regional or diffuse), amyloidosis
Late gadolinium enhancement	Fibrotic areas (regional fibrosis), viability

## 2.3 PET/MR cardiac image registration

The main challenge for cardiac PET in clinical practice is the compensation of physiologic motion, such as respiratory

and cardiac motion, for which a few methods have been developed to overcome the problem [18-20] including a two-stage cardiac PET and LGE co-registration method (Figure 1) [21].

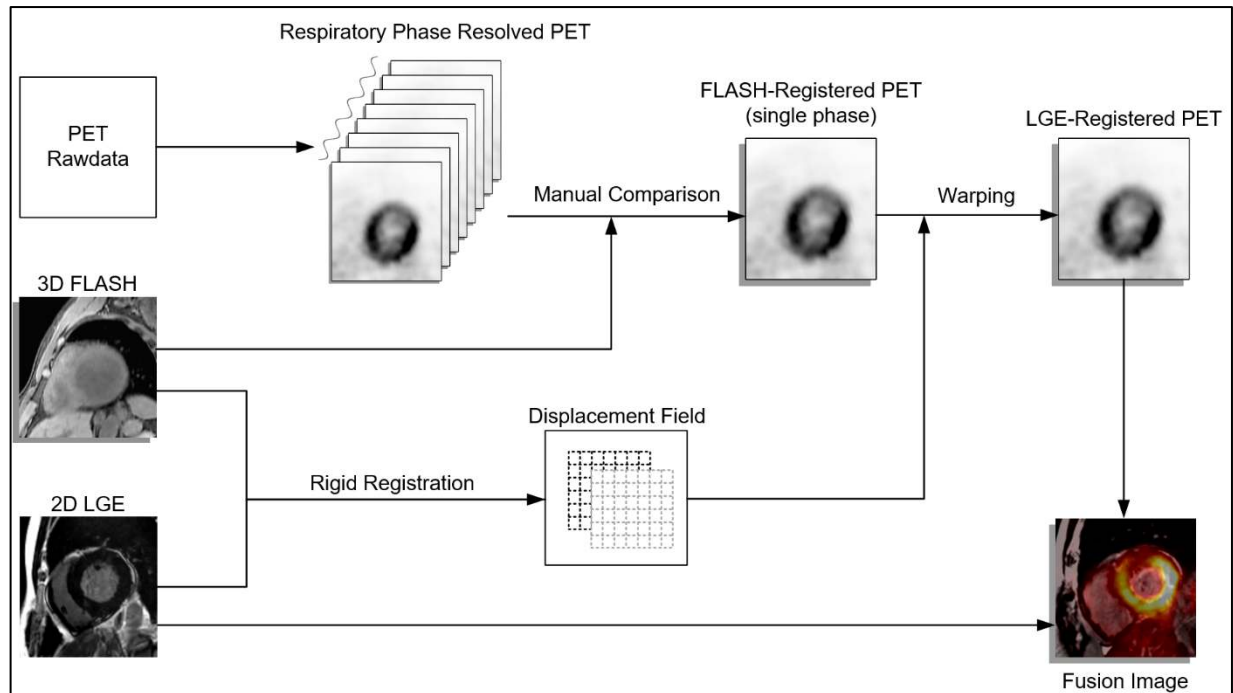


Figure 1. Two-stage cardiac PET and MR LGE co-registration method.

Figure 1 is an illustration of image co-registration of LGE and PET with two-stage registration. This comprises of four stages. The first is binning of list-mode PET data into eight respiratory bins based on respiratory signal. The second step is comparison of FLASH and respiratory phase resolved PET to choose one FLASH-registered phase. Thirdly, rigid registration is manually performed between 3D FLASH and 2D LGE and get the 3D displacement field. Finally, the displacement field is used to warp the images and generate LGE-registered PET.

### 3. Non-ischemic cardiomyopathies - hypertrophic and dilated cardiomyopathies

Non-ischemic cardiomyopathies are defined as diseases of the myocardium associated with mechanical or electrical dysfunction exhibiting inappropriate ventricular hypertrophy or dilatation and include dilated cardiomyopathy (DCM) and hypertrophic cardiomyopathy (HCM). Causes include primary and secondary causes,

encompassing genetic and acquired factors. CMR remains the main diagnostic tool for distinguishing many of these diseases; however, for certain diseases, PET can add valuable information by characterizing metabolic activity in the myocardial region.

LGE sequence can detect focal myocardial fibrosis and provide significant risk stratification for sudden cardiac death, mortality, and heart failure hospitalization in patients with non-ischemic cardiomyopathy [22]. The combination of metabolic information from  $^{18}\text{F}$ -fluoro-deoxy-glucose PET ( $^{18}\text{F}$ -FDG PET) and LGE can also provide additional evidence for the evaluation of myocardial viability and inflammation in non-ischemic cardiomyopathies.

#### Case Example

A 67-year-old male patient with known dilated cardiomyopathy (DCM) was evaluated for myocardial viability assessment.  $^{18}\text{F}$ -FDG PET/MR was performed at an uptake time of 60 minutes. Figure 2 shows short axial LGE images (A, C) and LGE/PET fusion images (B, D) of two LGE-enhanced lesions.



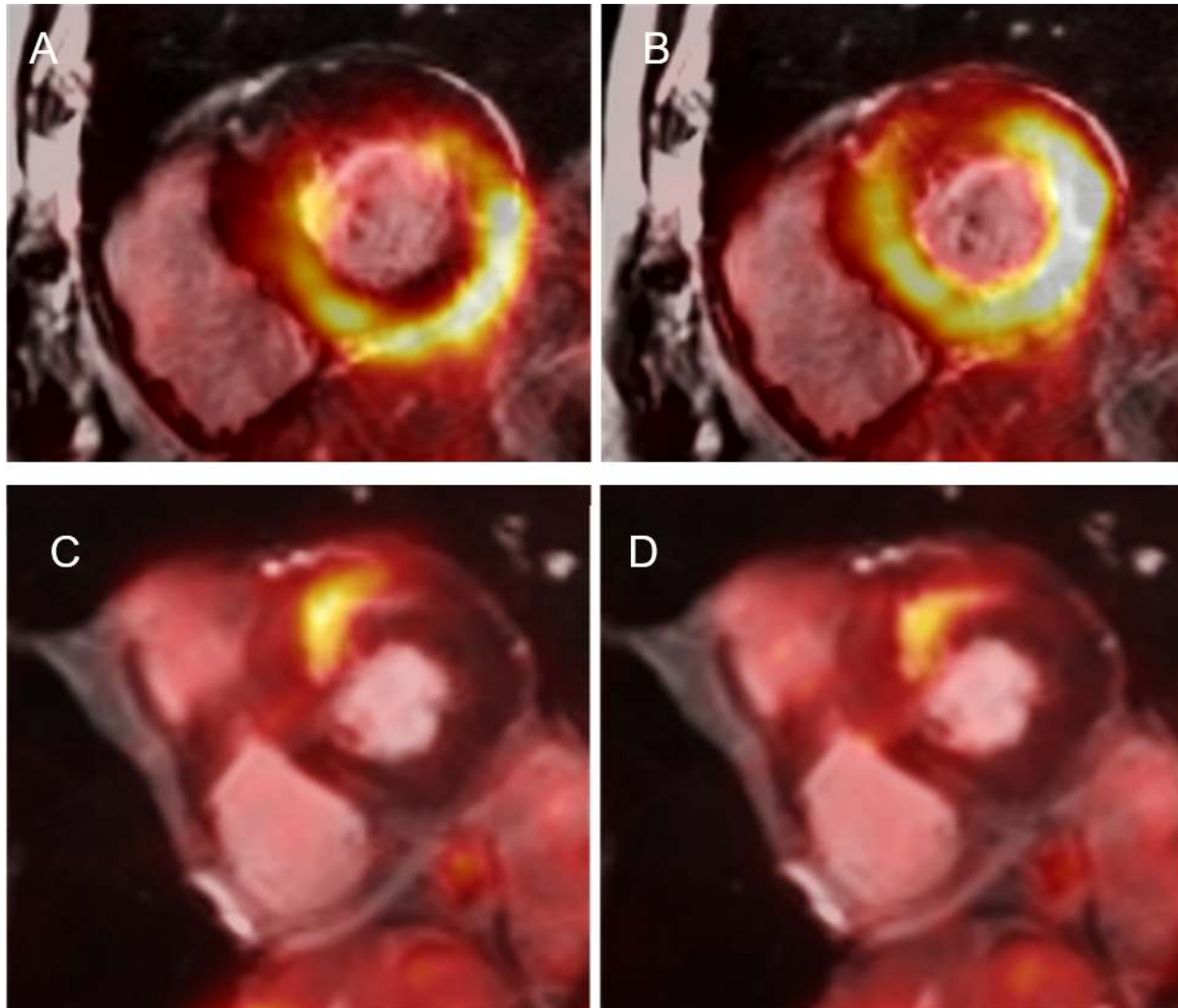


Figure 2. PET/MR images of a patient with dilated cardiomyopathy (DCM). Short axial LGE images (A, C) and LGE/PET fusion images (B, D) show two LGE-enhanced lesions.

#### 4. Cardiac amyloidosis (Restrictive cardiomyopathy)

Cardiac amyloidosis is a myocardial condition characterized by extracellular amyloid infiltration throughout the heart and is the leading cause of morbidity and mortality in systemic amyloidosis. The two types of amyloid that commonly infiltrate the heart include acquired monoclonal immunoglobulin light chain amyloid (AL) and transthyretin-related (familial and wild-type/senile) amyloid (ATTR). Differentiation of the two types is important because they have different prognoses and are amenable to different management strategies.

Early cardiac amyloidosis is challenging to diagnose and may only present with the features of right-sided congestive

heart failure in advanced disease. While endocardial biopsy is considered the gold standard for diagnosis of cardiac amyloidosis, it is not commonly used due to its high rate of complications. Other non-invasive diagnostic methods used include electrocardiography, echocardiography, CMR and nuclear medicine imaging.

Steady state free precession cine sequences in CMR are used to assess cardiac function and structure, while LGE imaging can diagnose cardiac amyloidosis. Although CMR is sensitive and specific for cardiac amyloidosis, CMR classically cannot differentiate the subtypes of cardiac amyloidosis and PET imaging is useful in this regard. However, recent studies have shown that AL frequently manifests as diffuse subendocardial LGE, while ATTR typically manifests as transmural LGE. MR parametric

mapping has also shown that the T1 value of ATTR patients was significantly higher than that of hypertrophic cardiomyopathy and normal controls, but not as high as that of AL patients, further helping in the characterization of cardiac amyloidosis.

Nuclear medicine imaging plays an important role in the diagnosis, classification, prognostic evaluation, and therapeutic response monitoring of myocardial amyloidosis [23-24]. Studies using  $^{18}\text{F}$ -NaF PET imaging [25-26] have shown that the myocardial uptake in ATTR patients is higher than AL patients and control groups, and the myocardial radioactivity uptake was consistent with the extent of damaged myocardium as seen on MR LGE. Similar studies have shown differences in uptake using  $^{18}\text{F}$ -florbetapir and  $^{18}\text{F}$ -florbetaben imaging in both ATTR and AL patients [27-28]. Hence, an important benefit of combining PET with CMR is the combination of quantifiable parameters to potentially aid prognosis and track disease progression.

### Case Example

A 65-year-old female with underlying history of amyloidosis presented with chest congestion and dyspnea. Echocardiography revealed pericardial effusion, pleural effusion, interventricular septum and left ventricular wall thickening. Gadolinium contrast enhanced CMR and dynamic cardiac PET imaging (Figure 3) was performed immediately after injection of  $^{18}\text{F}$ -florbetapir (AV45). CMR imaging revealed LV hypertrophy and impaired systolic function (LVEF=22%). LGE imaging (B, short axis view; E, 4 chamber view) demonstrated transmural late enhancement in the left ventricle. Delayed whole body maximum intensity PET (A, 90min post-injection) demonstrated elevated AV45 uptake in heart (SUVmax=8.86), lung (SUVmax=2.69) and spleen (SUVmax=7.75), compared to moderate uptake in the liver (SUVmax=3.09) caused by hepatobiliary excretion of the drug.

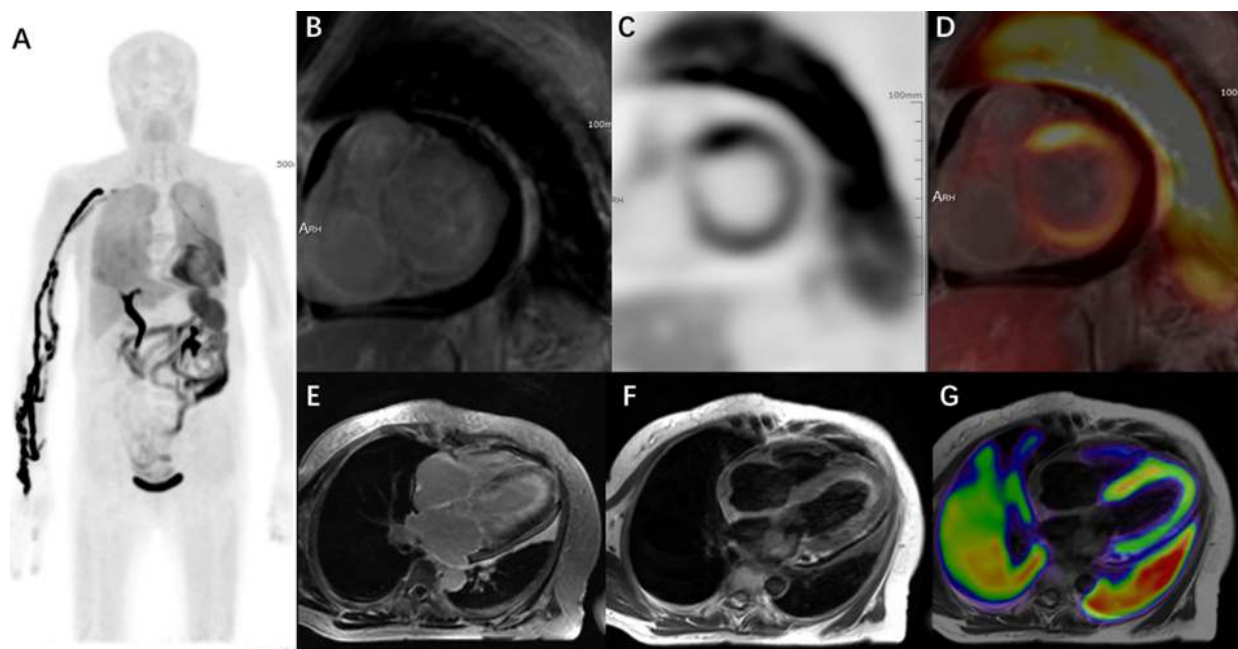


Figure 3. PET/MR images of a patient with cardiac amyloidosis.

## 5. Myocarditis

Myocarditis is an inflammatory disease of the myocardium that can be caused by various conditions including viral infections, autoimmune reactions, toxin exposure, drugs, and idiopathic factors [29]. The condition has a predilection

in young subjects, especially males [30]. Clinical symptoms are highly variable, making diagnosis challenging. In addition, investigations such as laboratory biomarkers (such as troponin, C-reactive protein), electrocardiography and echocardiography are nonspecific. Definite diagnosis relies on endomyocardial biopsy but this is not performed

frequently in practice due to its risk of complications.

Pathophysiological processes linked to myocardial inflammation, including myocardial hyperemia and edema in the early stages, and fibrosis or scarring in the later stages, as well as associated processes such as pericardial effusion and global or regional wall motion abnormalities, can be assessed using MR imaging [31]. The Lake Louise CMR criteria often used in assessment of myocarditis encompasses the three aspects of myocardial inflammation namely edema, hyperemia and necrosis and/or fibrosis. In addition to these, multiparametric T1 and T2 mapping can also be used for tissue characterization.

The use of  $^{18}\text{F}$ -FDG PET [32] allows accurate assessment of the extent and grade of both active and healed inflammatory processes. FDG uptake in myocarditis could be focal, diffuse, or 'focal on diffuse' depending on the underlying disease [33]. Thus,  $^{18}\text{F}$ -FDG PET/MR imaging has already been shown to be highly clinically relevant in patients with suspicion of myocarditis, with increasing evidence that  $^{18}\text{F}$ -FDG PET/MR imaging can diagnose, grade, and monitor myocarditis [34-36], with a clinical sensitivity of 74% and a specificity of 97% [37]. Notably, it has also been

shown that patients with biopsy-proven myocarditis have had abnormal uptake noted on  $^{18}\text{F}$ -FDG PET imaging, while having no corresponding evidence of myocardial damage on MR imaging, allowing for early diagnosis of myocarditis. Performing FDG PET imaging after treatment could also show interval improvement or resolution of the abnormal FDG uptake, highlighting further potential application in monitoring treatment response [38].

### Case Example

A 24-year-old male presented with signs and symptoms suggestive of myocarditis. Gadolinium contrast enhanced CMR and dynamic cardiac PET imaging starting immediately after injection of  $^{18}\text{F}$ -FDG (Figure 4). CMR imaging showed normal anatomy of the atrioventricular chambers with normal left ventricular motion and function (LVEF 70%). Delayed enhancement imaging showed blurred patchy, slightly high signal and line-like high signal in the basal segment of the anterior and inferior lateral walls of the left ventricle, and no obvious abnormal enhancement was found in the remaining ventricular wall segments. Myocardial metabolic imaging revealed increased radioactive uptake in each segment of the left ventricle.

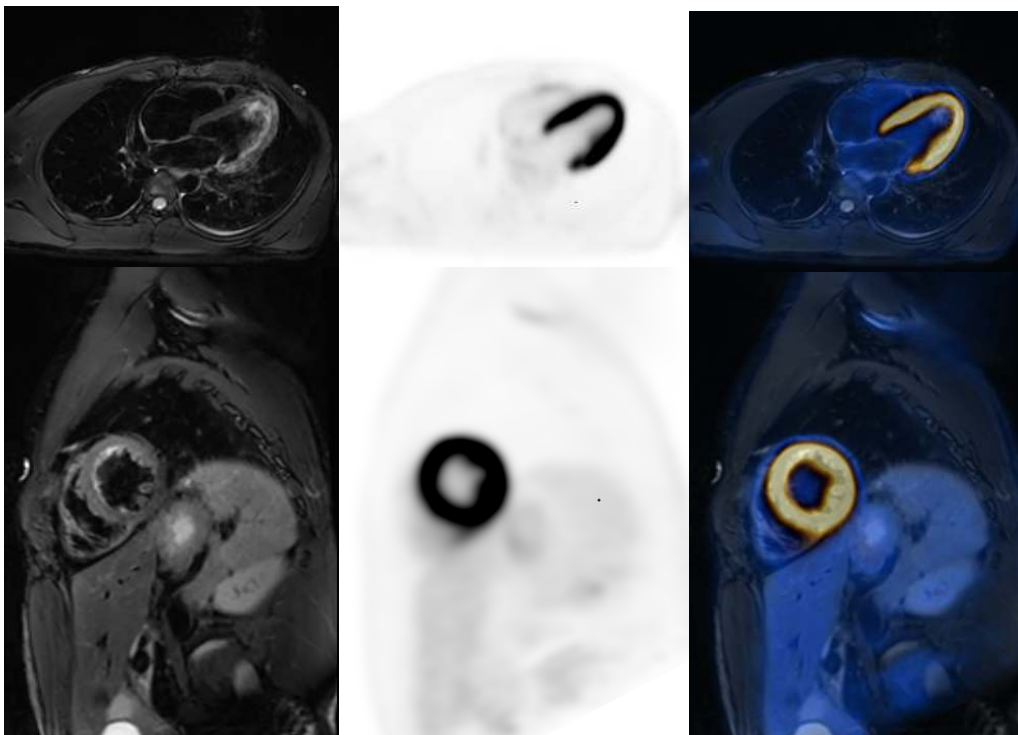


Figure 4. PET/MR images of a patient with myocarditis.



## 6. Heart Failure

Heart Failure is defined as a complex clinical syndrome resulting from any structural or functional cardiac condition that impairs the ability of the ventricle to fill or eject blood [39]. Several criteria have been proposed to diagnose heart failure such as the Framingham criteria [40].

Echocardiography is frequently used to provide information on the ventricular ejection fraction as well as the underlying cause of heart failure. Single-photon-emission computed tomography (SPECT) remains the most common imaging modality used for myocardial perfusion imaging in heart failure, but it has significant disadvantages such as limited resolution and involves the use of ionizing radiation. Due to these factors, there has been increasing use of myocardial perfusion imaging using PET to quantify myocardial blood flow using tracer kinetics, for which the sensitivity and specificity is thought to be approximately 90% [41-44]. It is also notable that a meta-analysis of single and multi-center studies confirmed the excellent sensitivity and specificity of CMR to quantify myocardial perfusion at rest and during stress [43-44]<sup>4</sup>. There is report showing that MR perfusion imaging is compared to that of SPECT and showed significant agreement in results with PET perfusion [45-46]<sup>46</sup>. The combination of PET and MR imaging allows for direct comparison of myocardial blood flow under resting and stress conditions. The assessment of myocardial viability is a standard approach utilized in patients with advanced coronary disease or who are in early or advanced states of heart failure. Identification of glucose utilization in viable myocardium by PET is made possible by FDG uptake demonstrated in myocardial segments with decreased

perfusion. Based on meta-analyses, <sup>18</sup>F-FDG PET predicts functional recovery after revascularization with a sensitivity of 92% and a specificity of 63% [47-48]. LGE also allows the identification of scarred myocardium as signal enhanced areas.

### Case Example

Figure 5 shows an example of <sup>68</sup>Ga-FAPI and FDG PET imaging of a 77-year-old male with history of coronary artery disease, that presented with acute pulmonary embolism. Echocardiography showed severe pulmonary hypertension (pulmonary artery systolic blood pressure elevated at 99mm Hg), right atrioventricular enlargement, as well as decreased right ventricular motion and function, with normal left ventricular systolic function. Pulmonary angiography and balloon angioplasty was performed and revealed multiple filling defects in the bilateral pulmonary arteries with poor distal perfusion. Gadolinium contrast enhanced CMR and dynamic cardiac PET imaging starting immediately after injection of <sup>68</sup>Ga-FAPI was performed (Figure 5). Gadolinium contrast enhanced CMR and dynamic cardiac PET imaging starting immediately after injection of FDG was performed the following day. CMR showed right atrial and ventricular enlargement and hypertrophy as seen in the 4-chamber and short axis views. <sup>68</sup>Ga-FAPI PET/MR imaging showed diffusely increased FAPI uptake in the right atrial muscle wall and increased scattered patchy FAPI uptake in the right ventricular muscle wall. <sup>18</sup>F-FDG PET/MR fusion images demonstrated that radioactivity uptake in the right ventricle and atrium were increased, more so in the right ventricle.

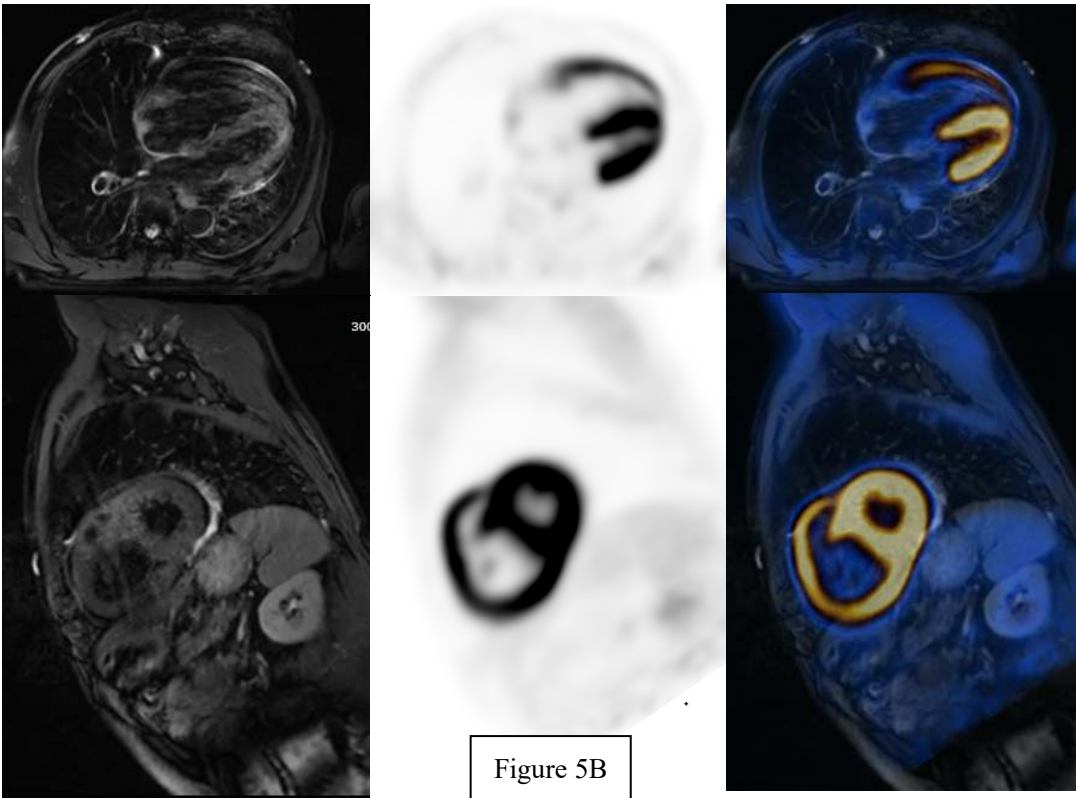
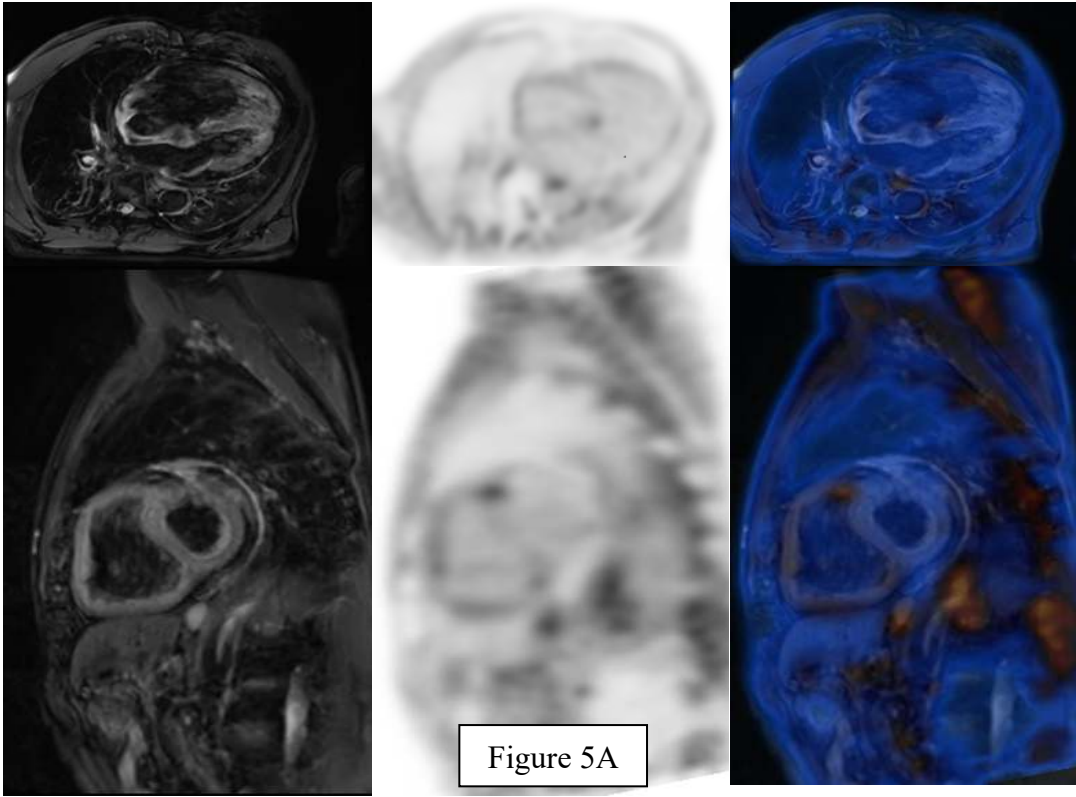


Figure 5. <sup>68</sup>Ga-FAPI and FDG PET/MR images of a patient with heart failure and extensive fibrosis.

## 7. Conclusion and Future Directions

Currently, there are three vendors providing PET/MR integrated scanners worldwide: Siemens Biograph mMR (2010), GE SIGNA (2013) and United Imaging Healthcare's uPMR® 790 (2017). The hybrid MR and PET imaging has demonstrated its clinical advantage in many cardiac applications and is increasing used in clinical routine imaging. Some disadvantages to this advancing technology exist, including the high cost of PET/MR exams and the complex technology requiring significant training in both PET and MR technology for technologists to run the scans. In addition, several cardiac devices including pacemakers, implantable cardioverter-defibrillators, and mechanical heart valves, as well as some coronary stents, are contraindications to PET/MR scans. However, with further improvements in PET/MR imaging technology and more studies evaluating the use of new imaging tracers, there is an exciting potential to harness the advantages of PET/MR in evaluating different cardiac diseases. Prospective single-center and multi-center study with large sample size are urgently needed to further explore the indications and new application area of integrated PET/MR.

## 8. Image/Figure Courtesy

All images are the courtesy of Shanghai East Hospital, Tongji University School of Medicine, Shanghai, China.

## 9. References

1. Fürst S, Grimm R, Hong I, et al. Motion correction strategies for integrated PET/MR. *J Nucl Med.* 2015;56:261–269.
2. Judenhofer MS, Wehrl HF, Newport DF, et al. Simultaneous PET-MRI: a new approach for functional and morphological. imaging. *Nat Med.* 2008;14:459–465.
3. A. P. Leynes et al., Hybrid ZTE/dixon MR-based attenuation correction for quantitative uptake estimation of pelvic lesions in PET/MRI, *Med. Phys.*, vol. 44, no. 3, pp. 902–913, 2017.
4. G. Delso, D. Gillett, W. Bashari, T. Matys, I. Mendichovszky, and M. Gurnell, Clinical evaluation of C-11-met-avid pituitary lesions. using a ZTE-based AC method, *IEEE Trans. Radiat. Plasma Med. Sci.*, vol. 3, no. 4, pp. 504–508, Jul. 2019.
5. P. Blanc-Durand et al., Attenuation correction using 3D deep convolutional neural network for brain 18F-FDG PET/MR: Comparison with Atlas, ZTE and CT based attenuation correction, *PLoS ONE*, vol. 14, Oct. 2019, Art. no. e0223141.
6. A. Rezaei, G. Schramm, S. M. A. Willekens, G. Delso, K. Van Laere, and J. A. Nuyts, Quantitative evaluation of joint activity and attenuation reconstruction in TOF PET/MR brain imaging, *J. Nucl. Med.*, vol. 60, no. 1, pp. 1649–1655, 2019.
7. M. Cencini, M. Tosetti, and G. Buonincontri, An aristotelian view on MR-based attenuation correction (ARISTOMRAC): Combining the four elements, *IEEE Trans. Radiat. Plasma Med. Sci.*, vol. 3, no. 4, pp. 491–497, Jul. 2019.
8. K. T. Chen et al., MR-assisted PET motion correction in simultaneous PET/MRI studies of dementia subjects, *J. Magn. Reson. Imag.*, vol. 48, no. 5, pp. 1288–1296, 2018.
9. M. G. Spangler-Bickell et al., Rigid motion correction for brain PET/MR imaging using optical tracking, *IEEE Trans. Radiat. Plasma Med. Sci.*, vol. 3, no. 4, pp. 498–503, Jul. 2019.
10. P. M. Robson et al., Correction of respiratory and cardiac motion in cardiac PET/MR using MR-based motion modeling, *Phys. Med. Biol.*, vol. 63, no. 22, 2018, Art. no. 225011.
11. Smith R. L., Rahni, A. A. A. J. Jones, and K. Wells, A Kalman based approach with EM optimization for respiratory motion modeling in medical imaging, *IEEE Trans. Radiat. Plasma Med. Sci.*, vol. 3, no. 4, pp. 410–420, Jul. 2019.
12. Ehman, E.C., Johnson, G.B., Villanueva-Meyer, J.E., Cha, S.; Leynes, A.P.; Larson, P.E.Z.; Hope, T.A. PET/MRI: Where might it replace PET/CT? *J. Magn. Reson. Imaging* 2017, 46, 1247–1262.
13. Nazir MS, Ismail TF, Reyes E, Chiribiri A, Kaufmann PA, Plein S. Hybrid positron emission tomography-magnetic resonance of the heart: current state of the art and future applications. *Eur Heart J Cardiovasc imaging.* 2018;19:962–74.

14. Bengel FM, Higuchi T, Javadi MS, Lautamäki R. Cardiac positron emission tomography. *J Am Coll Cardiol*. 2009;54:1–15.
15. Schindler TH, Schelbert HR, Quercioli A, Dilsizian V. Cardiac PET imaging for the detection and monitoring of coronary artery disease and microvascular health. *JACC Cardiovasc Imaging*. 2010;3:623–640.
16. Schwitter J, Wacker CM, van Rossum AC, et al. MR-IMPACT: comparison of perfusion-cardiac magnetic resonance with single-photon emission computed tomography for the detection of coronary artery disease in a multicentre, multivendor, randomized trial. *Eur Heart J*. 2008;29:480–489.
17. Karamitsos TD, Arvanitaki A, Karvounis H, Neubauer S, Ferreira VM. Myocardial Tissue Characterization and Fibrosis by Imaging. *JACC Cardiovasc Imaging*. 2020 May;13(5):1221-1234.
18. Chander A, Brenner M, Lautamäki R, Voicu C, Merrill J, Bengel FM. Comparison of measures of left ventricular function from electrocardiographically gated 82Rb PET with contrast-enhanced CT ventriculography: a hybrid PET/CT analysis. *J Nucl Med*. 2008;49:1643–1650.
19. Teräs M, Kokki T, Durand-Schaefer N, et al. Dual-gated cardiac PET: clinical feasibility study. *Eur J Nucl Med Mol Imaging*. 2010;37:505–516.
20. Kolbitsch C, Ahlman MA, Davies-Venn C, Evers R, Hansen M, Peressutti D, Marsden P, Kellman P, Bluemke DA, Schaeffter T. Cardiac and Respiratory Motion Correction for Simultaneous Cardiac PET/MR. *J Nucl Med*. 2017 May;58(5):846-852.
21. Zhang Z, Chen X, Wan Q, Wang H, Qi N, You Z, Yuan J, Hu L, Sun H, Wang Z, Hu C, Zhao J. A two-stage cardiac PET and late gadolinium enhancement MRI co-registration method for improved assessment of non-ischemic cardiomyopathies using integrated PET/MR. *Eur J Nucl Med Mol Imaging*. 2022 Jun;49(7):2199-2208.
22. Jagsi R, Moran JM, Kessler ML, Marsh RB, Balter JM, Pierce LJ. Respiratory motion of the heart and positional reproducibility under active breathing control. *Int J Radiation Oncol Biol Phys*. 2007;68:253–8.
23. Ren Jingyun, He Shan, Tian Zhuang, et al. Application progress of nuclear medicine imaging in the diagnosis of myocardial amyloidosis [J]. *Chinese Journal of Nuclear Medicine and Molecular Imaging*, 2019, 39(12): 759-762.
24. Ren JY, He S, Tian Z, et al. Application of nuclear medical imaging in the diagnosis of myocardial amyloidosis[J]. *Chin J Nucl Med Mol Imaging*, 2019, 39(12): 759-762.
25. Morgenstern R, Yeh R, Castano A, et al. <sup>18</sup>Fluorine sodium fluoride positron emission tomography, a potential biomarker of transthyretin cardiac amyloidosis[J]. *J Nucl Cardiol*, 2018, 25(5): 1559-1567.
26. Trivieri MG, Dweck MR, Abgral R, et al. <sup>18</sup>F-Sodium fluoride PET/MR for the assessment of cardiac amyloidosis[J]. *J Am Coll Cardiol*, 2016, 68(24): 2712-2714.
27. Dorbala S, Vangala D, Semer J, et al. Imaging cardiac amyloidosis: a pilot study using <sup>18</sup>F-florbetapir positron emission tomography[J]. *Eur J Nucl Med Mol Imaging*, 2014, 41(9): 1652- 1662.
28. Baratto L, Park SY, Hatami N, et al. <sup>18</sup>F-florbetaben whole-body PET/MRI for evaluation of systemic amyloid deposition[J]. *EJNMMI Res*, 2018, 8(1): 66.
29. Caforio AL, Pankuweit S, Arbustini E, Basso C, Gimeno-Blanes J, Felix SB, et al. Current state of knowledge on aetiology, diagnosis, management, and therapy of myocarditis: a position statement of the European Society of Cardiology Working Group on Myocardial and Pericardial Diseases. *Eur Heart J*. 2013;34:2636–48.
30. Caforio ALP, Malipiero G, Marcolongo R, Iliceto S. Myocarditis: a clinical overview. *Curr Cardiol Rep*. 2017;19:63–74.
31. Heusch P, Nensa F, Heusch G. Is MRI really the gold standard for the quantification of salvage from myocardial infarction? *Circ Res* 2015;117:222–4.
32. Erba PA, Sollini M, Lazzeri E, et al. FDG-PET in cardiac infections. *Semin Nucl Med* 2013;43:377–95.
33. Ozawa K, Funabashi N, Daimon M, Takaoka H, Takano H, Uehara M, et al. Determination of optimum periods between onset of suspected acute myocarditis and <sup>18</sup>F-fluorodeoxyglucose positron emission tomography in the diagnosis of inflammatory left ventricular myocardium. *Int J Cardiol*. 2013;169:196–200.

34. Nensa F, Poeppel TD, Krings P, et al. Multiparametric assessment of myocarditis using simultaneous positron emission tomography/magnetic resonance imaging. *Eur Heart J* 2014;35:2173.
35. von Olshausen G, Hyafil F, Langwieser N, et al. Detection of acute inflammatory myocarditis in Epstein Barr virus infection using hybrid <sup>18</sup>F-fluorodeoxyglucose-positron emission tomography/magnetic resonance imaging. *Circulation* 2014;130:925–6.
36. Piriou N, Sassier J, Pallardy A, et al. Utility of cardiac FDG-PET imaging coupled to magnetic resonance for the management of an acutemyocarditis with non-informative endomyocardial biopsy. *Eur Heart J Cardiovasc Imaging* 2015;16:574.
37. Nensa F, Kloth J, Tezgaç E, et al. Feasibility of FDGPET in myocarditis: comparison to CMR using integrated PET/MRI. *J Nucl Cardiol* 2018;25:785–94.
38. Moriwaki K, Dohi K, Omori T, Tanimura M, Sugiura E, Nakamori S, et al. A survival case of fulminant right-side dominant eosinophilic myocarditis. *Int Heart J*. 2017;58:459–62.
39. Jessup M, Abraham WT, Casey DE, Feldman AM, Francis GS, Ganiats TG, Konstam MA, Mancini DM, Rahko PS, Silver MA, Stevenson LW, Yancy CW. 2009 focused update: ACCF/AHA Guidelines for the Diagnosis and Management of Heart Failure in Adults: a report of the American College of Cardiology Foundation/American Heart Association Task Force on Practice Guidelines: developed in collaboration with the International Society for Heart and Lung Transplantation. *Circulation*. 2009; 119:1977–2016.
40. McKee PA, Castelli WP, McNamara PM, Kannel WB. The natural history of congestive heart failure: the Framingham study. *N Engl J Med*. 1971; 285:1441–1446.
41. Parker MW, Iskandar A, Limone B, Perugini A, Kim H, Jones C, Calamari B, Coleman CI, Heller GV. Diagnostic accuracy of cardiac positron emission tomography versus single photon emission computed tomography for coronary artery disease: a bivariate meta-analysis. *Circ Cardiovasc Imaging*. 2012;5:700–7.
42. Klocke FJ, Baird MG, Lorell BH, et al. ACC/AHA/ASNC guidelines for the clinical use of cardiac radionuclide imaging—executive summary: a report of the American College of Cardiology/ American Heart Association task force on practice guidelines (ACC/AHA/ASNC Committee to revise the 1995 guidelines for the clinical use of cardiac radionuclide imaging). *J Am Coll Cardiol*. 2003;42:1318–33.
43. Schwitter J, Nanz D, Kneifel S, Bertschinger K, Büchi M, Knüsel PR, Marincek B, Lüscher TF, von Schulthess GK. Assessment of myocardial perfusion in coronary artery disease by magnetic resonance: a comparison with positron emission tomography and coronary angiography. *Circulation*. 2001;103:2230–5.
44. Nandalur KR, Dwamena BA, Choudhri AF, Nandalur MR, Carlos RC. Diagnostic performance of stress cardiac magnetic resonance imaging in the detection of coronary artery disease: a meta-analysis. *J Am Coll Cardiol*. 2007;50:1343–53.
45. Greenwood JP, Maredia N, Younger JF, et al. Cardiovascular magnetic resonance and single-photon emission computed tomography for diagnosis of coronary heart disease (CE-MARC): a prospective trial. *Lancet*. 2012;379:453–60.
46. Morton G, Chiribiri A, Ishida M, et al. Quantification of absolute myocardial perfusion in patients with coronary artery disease: comparison between cardiovascular magnetic resonance and positron emission tomography. *J Am Coll Cardiol*. 2012;60:1546–55.
47. Tillisch J, Brunken R, Marshall R, Schwaiger M, Mandelkern M, Phelps M, Schelbert H. Reversibility of cardiac wall-motion abnormalities predicted by positron tomography. *N Engl J Med*. 1986;314:884–8.
48. Schinkel AFL, Poldermans D, Elhendy A, Bax JJ. Assessment of myocardial viability in patients with heart failure. *J Nucl Med*. 2007;48:1135–46.



## Author Biography

---



**Dr. Jun Zhao**

Director of Nuclear Medicine  
and Molecular Imaging  
Shanghai East Hospital,  
Tongji University  
Shanghai, China

---

Dr. Jun Zhao is the director of nuclear medicine and molecular imaging at Shanghai East Hospital affiliated with Tongji University. Dr. Zhao is a pioneer in PET/CT and PET/MR imaging in China. Dr. Zhao is the executive editor for Journal of Chinese Nuclear Medicine and Molecular Imaging, International Radiology and Nuclear Medicine. Dr. Zhao also serves as the vice president for Shanghai Society of Nuclear Medicine and Molecular Imaging.

# PASSION for CHANGE

©2022 United Imaging Healthcare Co., Ltd. All rights reserved.

If you have any questions about the magazine, or simply wish to reach out to us for any other reasons, you are welcomed to contact us at the following email

address: [uinnovation-global@united-imaging.com](mailto:uinnovation-global@united-imaging.com)